



SHSU AVE I PARKING STRUCTURE

1698 AVENUE I
HUNTSVILLE, TX 77340

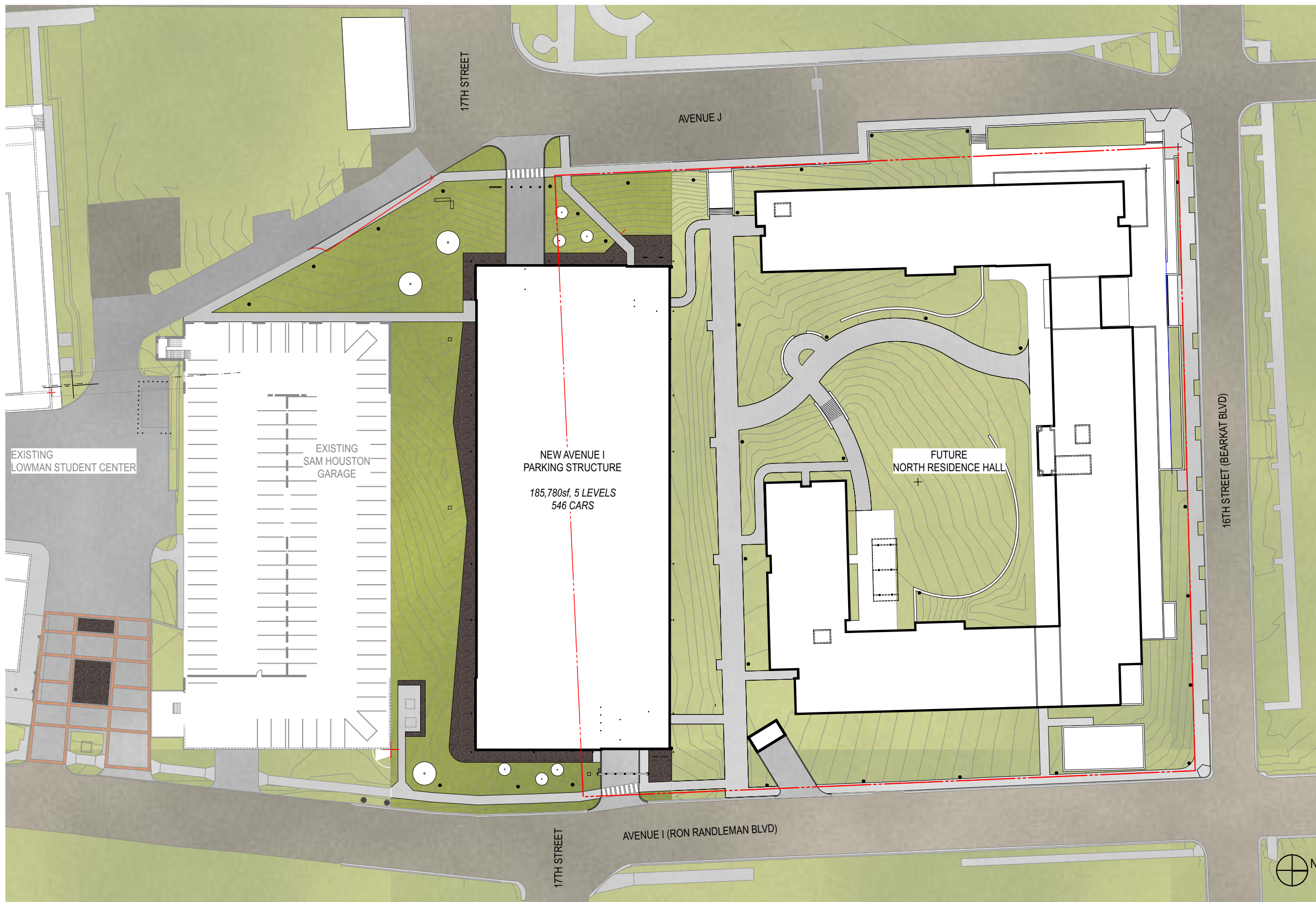
EA PROJECT NUMBER: 20028

DATE: 14 April 2021

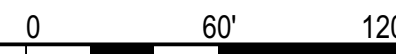
COVER

1

NOT FOR REGULATORY APPROVAL,
PERMITTING, OR CONSTRUCTION



SITE PLAN



SHSU AVE I PARKING STRUCTURE

1698 AVENUE I
HUNTSVILLE, TX 77340

EA PROJECT NUMBER: 20028

DATE: 14 April 2021

SITE PLAN

2

NOT FOR REGULATORY APPROVAL,
PERMITTING, OR CONSTRUCTION



FLOOR PLAN KEY NOTES

- ① VEHICULAR CONCRETE PAVING
- ② PEDESTRIAN CONCRETE PAVING
- ③ FREESTANDING STEEL PORTAL FRAME FOR CLEARANCE HEIGHT SIGNAGED
- ④ REMOVABLE BOLLARDS
- ⑤ PEDESTRIAN POLE-MTD LIGHT FIXTURE
- ⑥ MONUMENT SIGN W/ PGS COUNTING DISPLAY
- ⑦ EXISTING TRANSFORMERS TO REMAIN
- ⑧ POLE-MTD LIGHT FIXTURE
- ⑨ HORIZONTAL PRECAST PANEL ROOF ASSEMBLY ABOVE

SHSU AVE I PARKING STRUCTURE

1698 AVENUE I
HUNTSVILLE, TX 77340

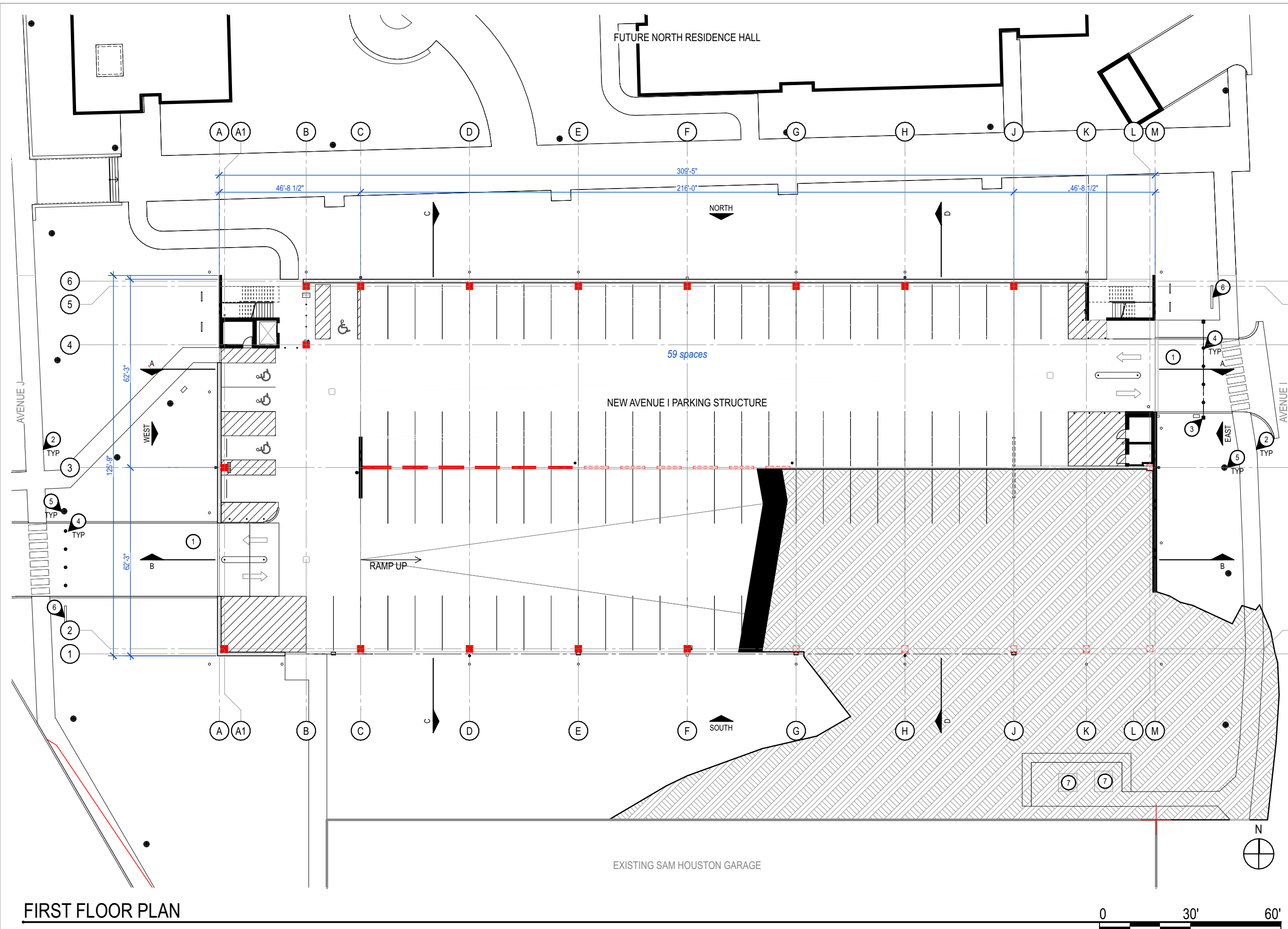
EA PROJECT NUMBER: 20028

DATE: 14 April 2021

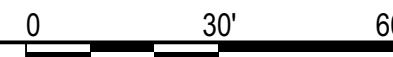
FIRST FLOOR PLAN

3

NOT FOR REGULATORY APPROVAL,
PERMITTING, OR CONSTRUCTION



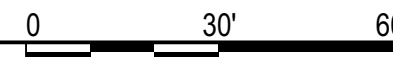
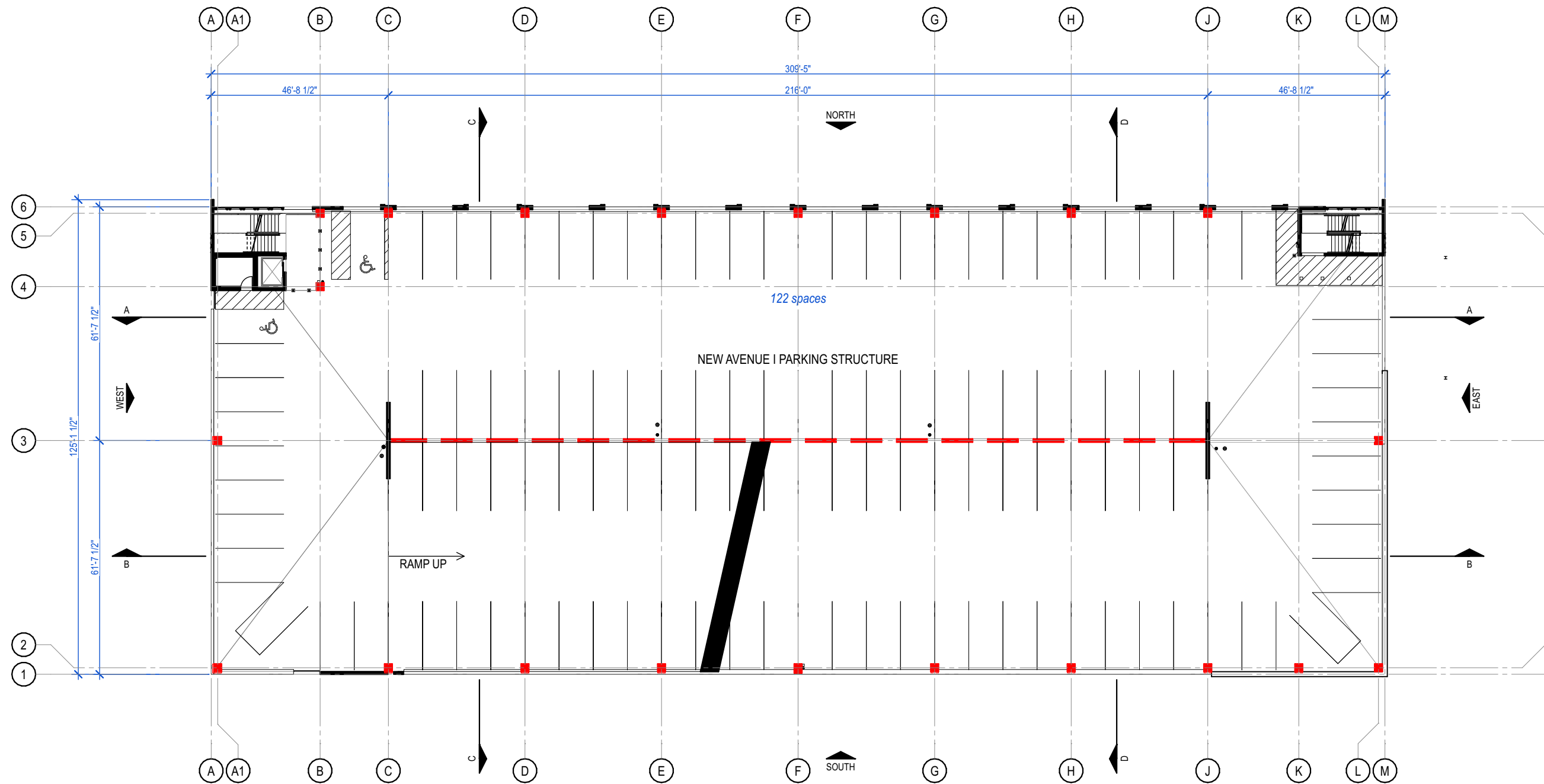
FIRST FLOOR PLAN





FLOOR PLAN KEY NOTES

- ① VEHICULAR CONCRETE PAVING
- ② PEDESTRIAN CONCRETE PAVING
- ③ FREESTANDING STEEL PORTAL FRAME FOR CLEARANCE HEIGHT SIGNAGED
- ④ REMOVABLE BOLLARDS
- ⑤ PEDESTRIAN POLE-MTD LIGHT FIXTURE
- ⑥ MONUMENT SIGN W/ PGS COUNTING DISPLAY
- ⑦ EXISTING TRANSFORMERS TO REMAIN
- ⑧ POLE-MTD LIGHT FIXTURE
- ⑨ HORIZONTAL PRECAST PANEL ROOF ASSEMBLY ABOVE



SECOND THROUGH FOURTH FLOOR PLAN

SHSU AVE I PARKING STRUCTURE

1698 AVENUE I
HUNTSVILLE, TX 77340

EA PROJECT NUMBER: 20028

DATE: 14 April 2021

SECOND THROUGH FOURTH FLOOR PLAN

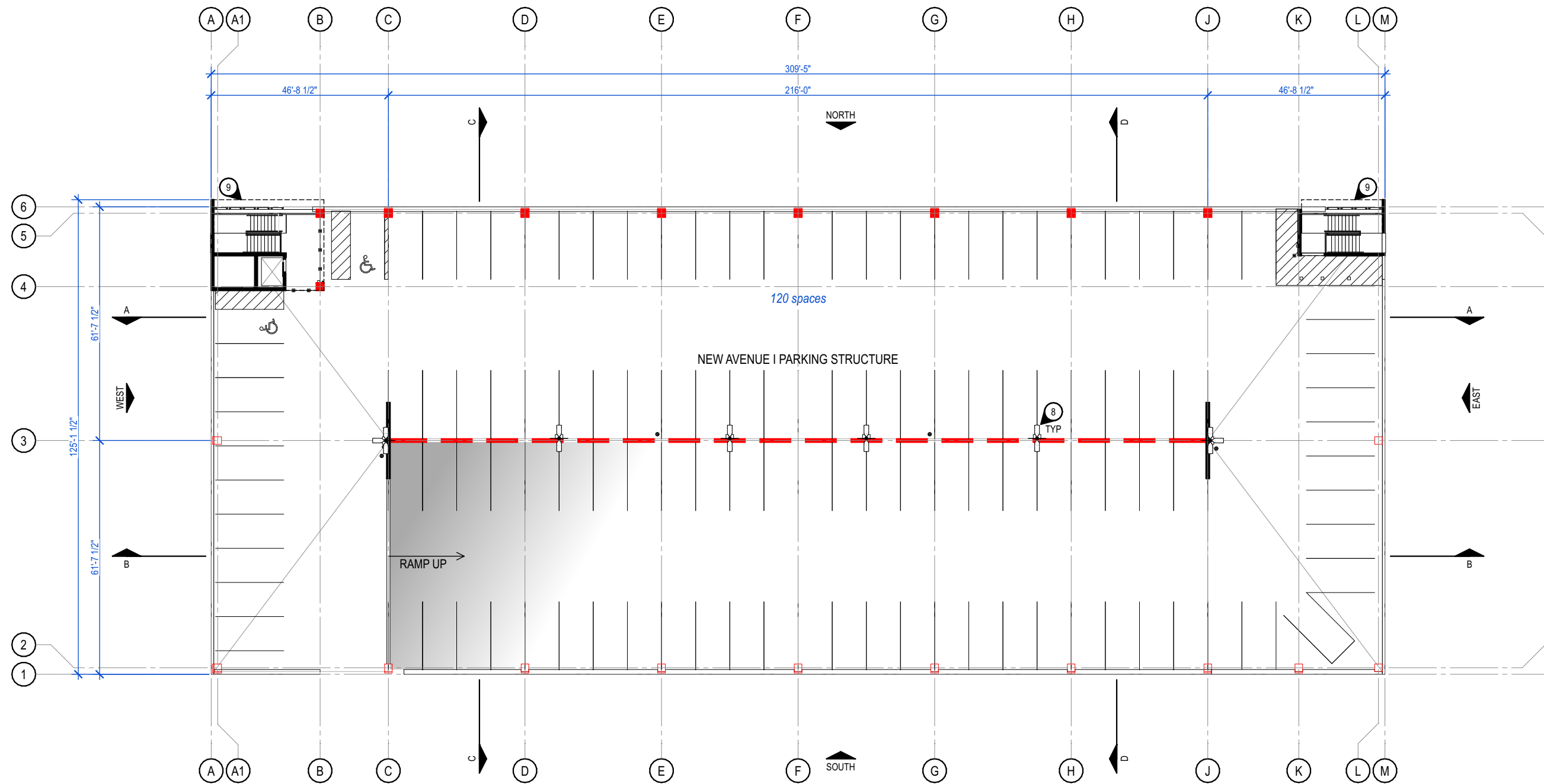
4

NOT FOR REGULATORY APPROVAL,
PERMITTING, OR CONSTRUCTION



FLOOR PLAN KEY NOTES

- ① VEHICULAR CONCRETE PAVING
- ② PEDESTRIAN CONCRETE PAVING
- ③ FREESTANDING STEEL PORTAL FRAME FOR CLEARANCE HEIGHT SIGNAGED
- ④ REMOVABLE BOLLARDS
- ⑤ PEDESTRIAN POLE-MTD LIGHT FIXTURE
- ⑥ MONUMENT SIGN W/ PGS COUNTING DISPLAY
- ⑦ EXISTING TRANSFORMERS TO REMAIN
- ⑧ POLE-MTD LIGHT FIXTURE
- ⑨ HORIZONTAL PRECAST PANEL ROOF ASSEMBLY ABOVE



FIFTH FLOOR PLAN

SHSU AVE I PARKING STRUCTURE

1698 AVENUE I
HUNTSVILLE, TX 77340

EA PROJECT NUMBER: 20028

DATE: 14 April 2021

FIFTH FLOOR PLAN

5

NOT FOR REGULATORY APPROVAL,
PERMITTING, OR CONSTRUCTION



SECTION | ELEVATION KEY NOTES

- ① SHSU-BLEND MODULAR BRICK VENEER OVER REINF. CMU BACKUP WALL
- ② PRECAST CONCRETE STRUCTURE W/ ARCHITECTURAL FINISH
- ③ HORIZONTAL PRECAST CONCRETE PANEL ROOF ASSEMBLY
- ④ PREFINISHED PERFORATED ALUMINUM PANEL ON MISC STEEL BACKUP SUPPORT
- ⑤ POLE-MTD LIGHT FIXTURE
- ⑥ WALL-MTD WALL PACK LIGHT FIXTURE
- ⑦ ILLUMINATED BUILDING SIGNAGE
- ⑧ FREESTANDING STEEL PORTAL FRAME FOR CLEARANCE HEIGHT SIGNAGED
- ⑨ REMOVABLE BOLLARDS
- ⑩ GALVANIZED STEEL GUARDRAIL
- ⑪ PRECAST CONCRETE CENTER RAMP WALL
- ⑫ CAST-IN-PLACE CONCRETE CENTER RAMP WALL PLINTH
- ⑬ GALVANIZED STEEL PEDESTRIAN BARRIER AT RAMP WALL OPENING

SHSU AVE I PARKING STRUCTURE

1698 AVENUE I
HUNTSVILLE, TX 77340

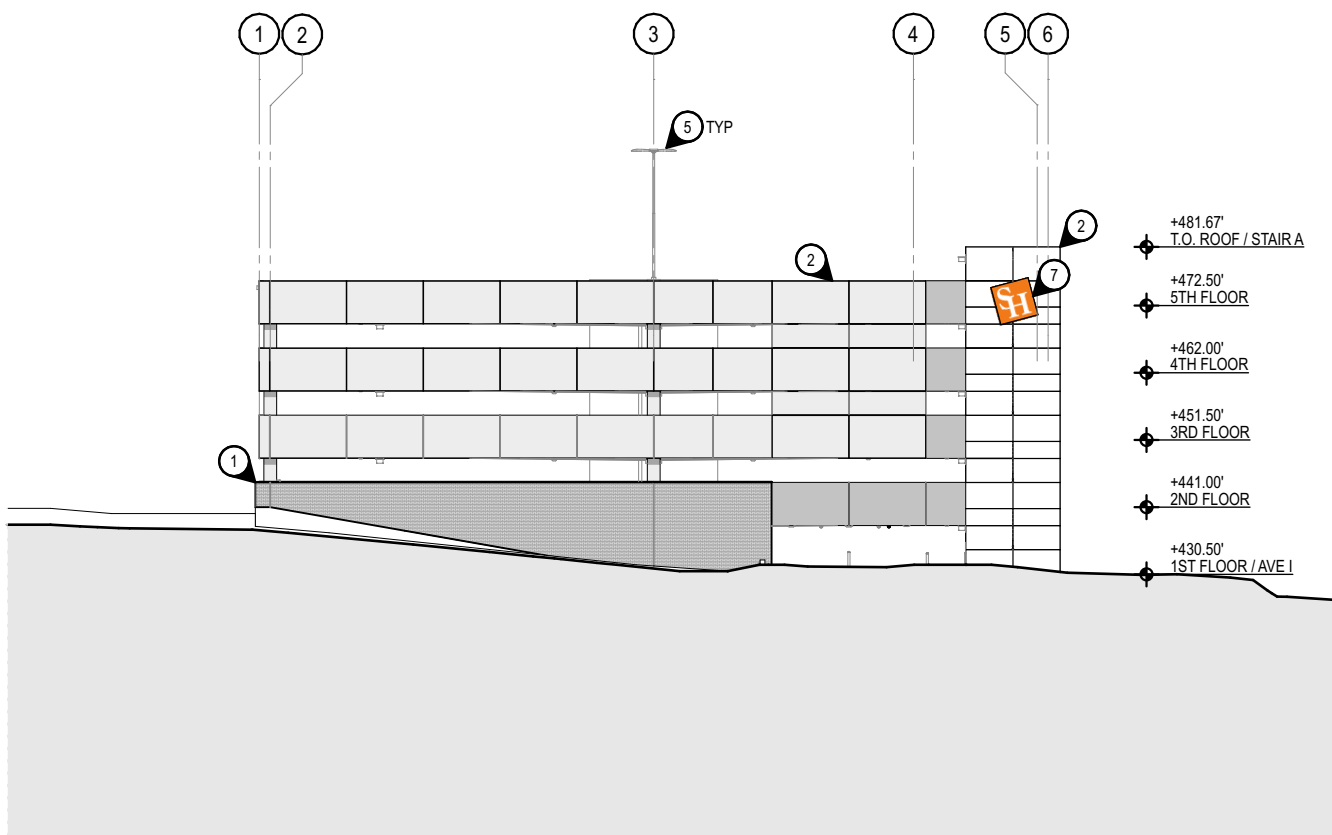
EA PROJECT NUMBER: 20028

DATE: 14 April 2021

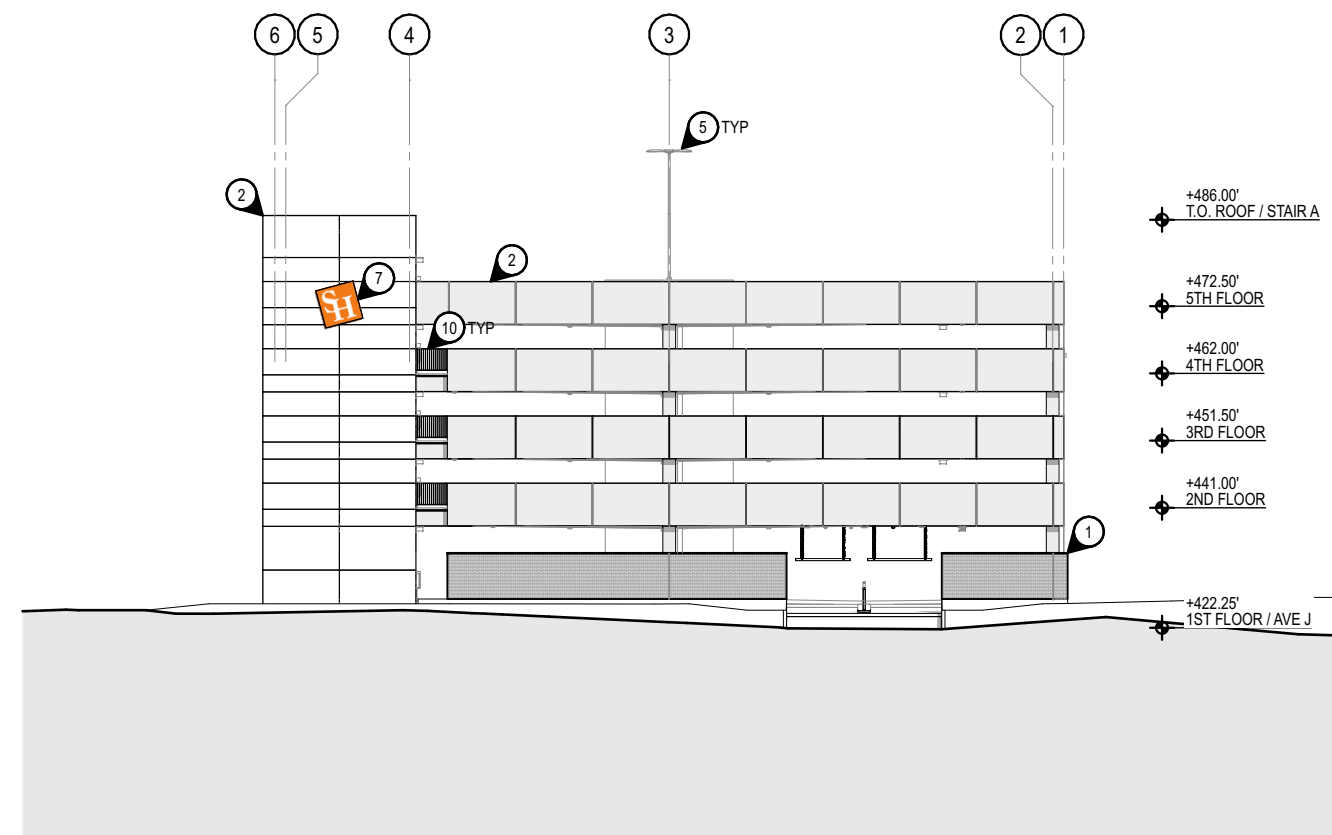
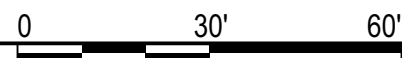
ELEVATIONS

6

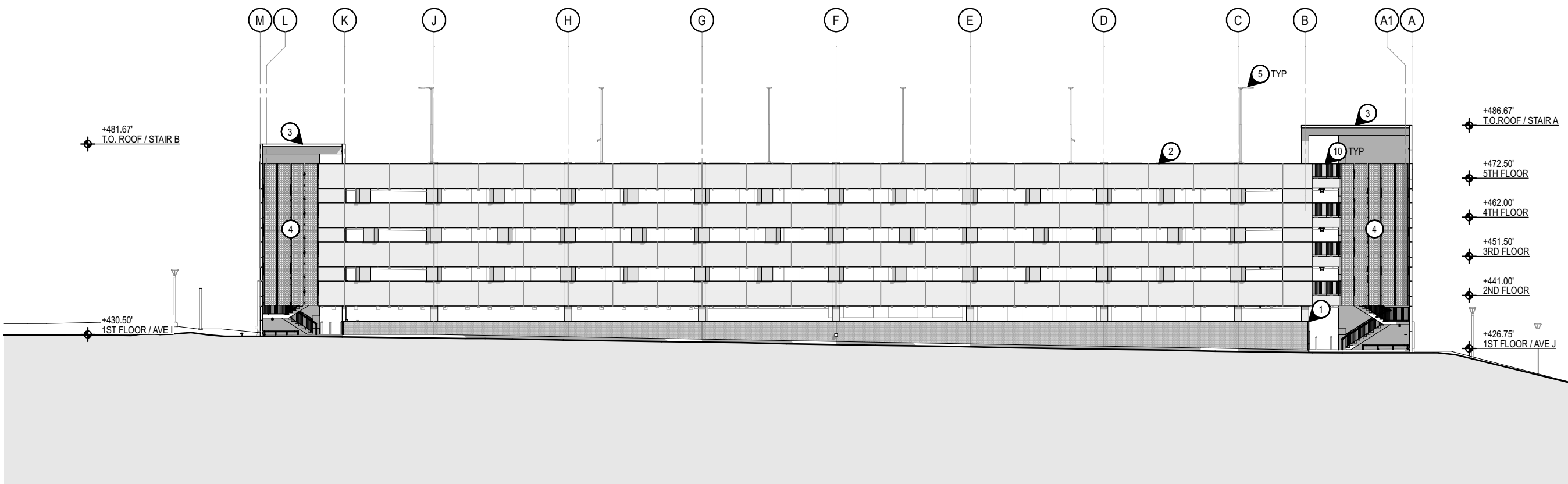
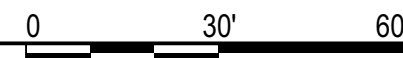
NOT FOR REGULATORY APPROVAL,
PERMITTING, OR CONSTRUCTION



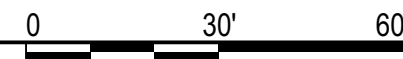
EAST



WEST



NORTH





SECTION | ELEVATION KEY NOTES

- ① SHSU-BLEND MODULAR BRICK VENEER OVER REINF. CMU BACKUP WALL
- ② PRECAST CONCRETE STRUCTURE W/ ARCHITECTURAL FINISH
- ③ HORIZONTAL PRECAST CONCRETE PANEL ROOF ASSEMBLY
- ④ PREFINISHED PERFORATED ALUMINUM PANEL ON MISC STEEL BACKUP SUPPORT
- ⑤ POLE-MTD LIGHT FIXTURE
- ⑥ WALL-MTD WALL PACK LIGHT FIXTURE
- ⑦ ILLUMINATED BUILDING SIGNAGE
- ⑧ FREESTANDING STEEL PORTAL FRAME FOR CLEARANCE HEIGHT SIGNAGED
- ⑨ REMOVABLE BOLLARDS
- ⑩ GALVANIZED STEEL GUARDRAIL
- ⑪ PRECAST CONCRETE CENTER RAMP WALL
- ⑫ CAST-IN-PLACE CONCRETE CENTER RAMP WALL PLINTH
- ⑬ GALVANIZED STEEL PEDESTRIAN BARRIER AT RAMP WALL OPENING

SHSU AVE I PARKING STRUCTURE

1698 AVENUE I
HUNTSVILLE, TX 77340

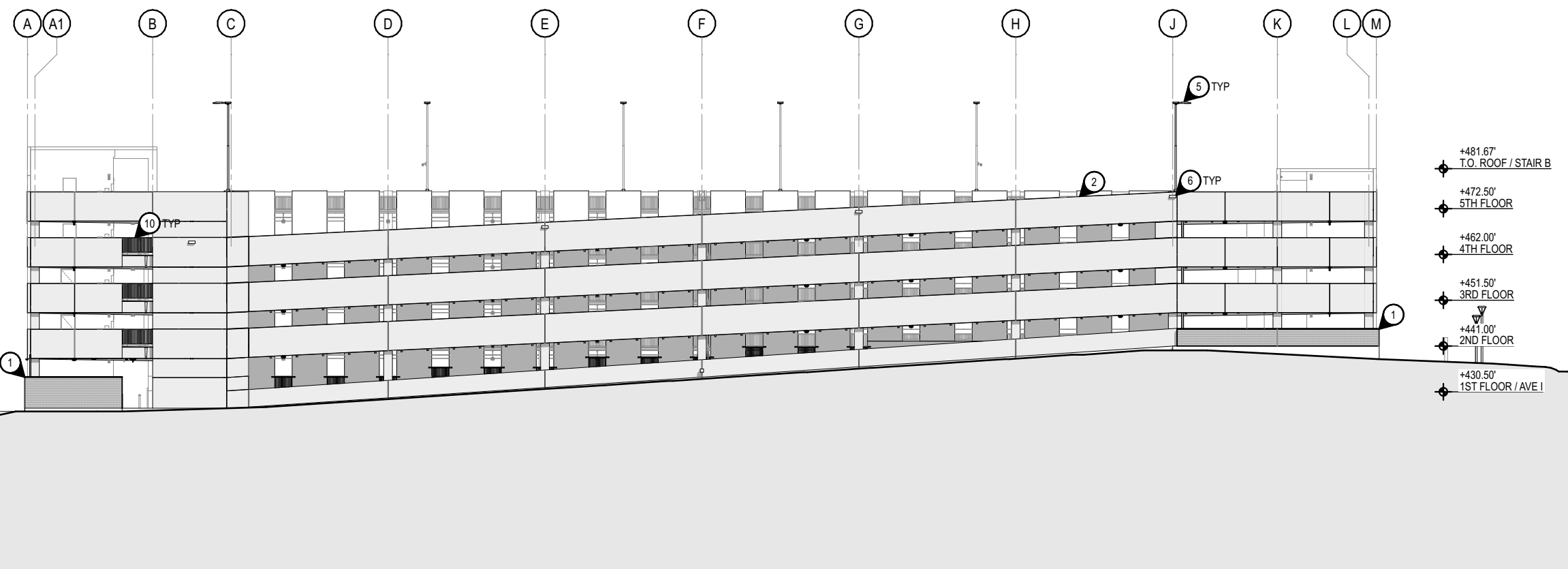
EA PROJECT NUMBER: 20028

DATE: 14 April 2021

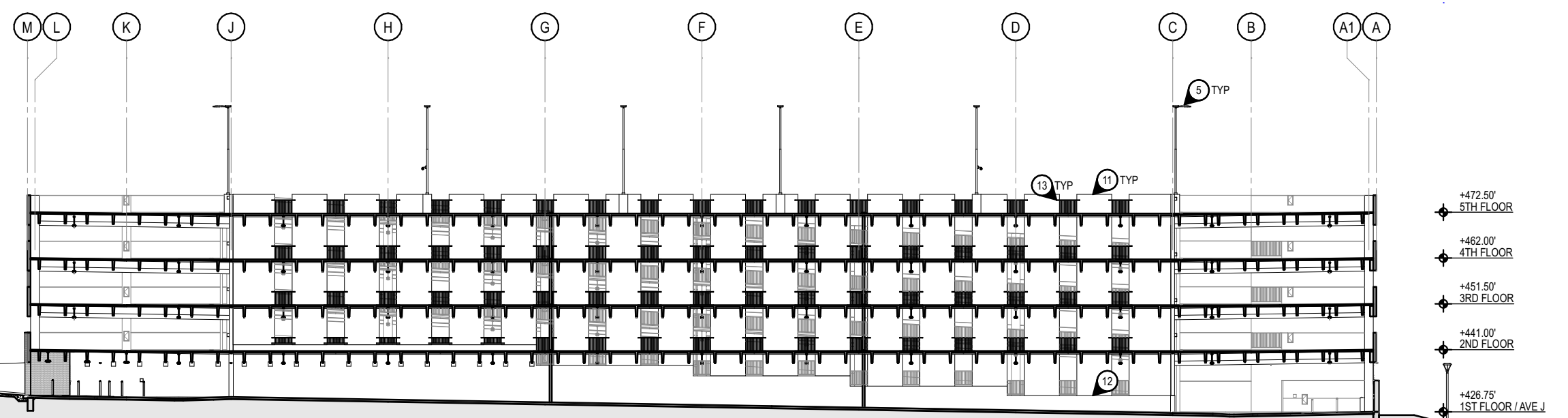
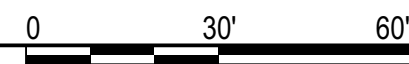
ELEVATION/SECTION

7

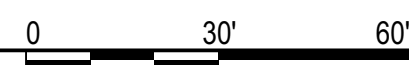
NOT FOR REGULATORY APPROVAL,
PERMITTING, OR CONSTRUCTION



SOUTH



A





SECTION | ELEVATION KEY NOTES

- ① SHSU-BLEND MODULAR BRICK VENEER OVER REINF. CMU BACKUP WALL
- ② PRECAST CONCRETE STRUCTURE W/ ARCHITECTURAL FINISH
- ③ HORIZONTAL PRECAST CONCRETE PANEL ROOF ASSEMBLY
- ④ PREFINISHED PERFORATED ALUMINUM PANEL ON MISC STEEL BACKUP SUPPORT
- ⑤ POLE-MTD LIGHT FIXTURE
- ⑥ WALL-MTD WALL PACK LIGHT FIXTURE
- ⑦ ILLUMINATED BUILDING SIGNAGE
- ⑧ FREESTANDING STEEL PORTAL FRAME FOR CLEARANCE HEIGHT SIGNAGED
- ⑨ REMOVABLE BOLLARDS
- ⑩ GALVANIZED STEEL GUARDRAIL
- ⑪ PRECAST CONCRETE CENTER RAMP WALL
- ⑫ CAST-IN-PLACE CONCRETE CENTER RAMP WALL PLINTH
- ⑬ GALVANIZED STEEL PEDESTRIAN BARRIER AT RAMP WALL OPENING

SHSU AVE I PARKING STRUCTURE

1698 AVENUE I
HUNTSVILLE, TX 77340

EA PROJECT NUMBER: 20028

DATE: 14 April 2021

SECTIONS

8

NOT FOR REGULATORY APPROVAL,
PERMITTING, OR CONSTRUCTION

